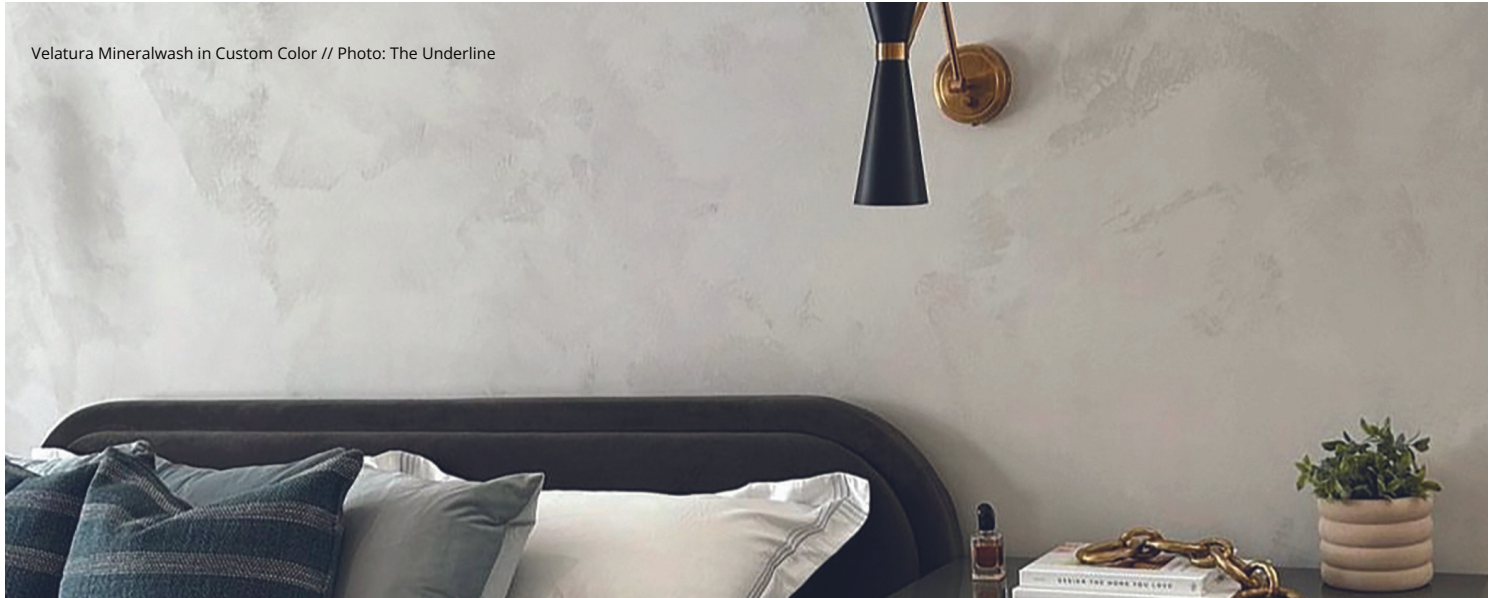


# VELATURA MINERALWASH

*for an* INTERIOR LIMEWASH LOOK



## PRODUCT FEATURES

- Perfect for PROs and DIYers
- No primer needed
- Neutral base that can be custom tinted
- Brush-applied in two easy steps
- Decorative, flat finish for artistic effects
- Toxin-free, Zero-VOC, and environmentally friendly
- Multiple applicators can work the same wall and achieve similar effects
- Recommended in bedrooms, living rooms, and other common areas

“Velatura Mineralwash is a great formulation. I’ve used similar products but this is by far the most versatile product I have applied. I also love that it is natural, authentic mineral-based paint and doesn’t have the smells and off-gassing either.”

*~ Hans Cook, Reflections of Italy*



# VELATURA MINERALWASH

for an INTERIOR LIMEWASH LOOK

## COLORS & APPLICATION

- Neutral base that can be custom tinted
- For medium to darker colors, the same color can be used for the 1st and 2nd coats.
- For whites and lighter colors, use a slightly darker color shade for the 1st coat vs. the 2nd coat to create more tonal variation and movement effects.

## SIZES AVAILABLE

- **1L SKU:** VMW-BIANCO-NB-1L
- **2.5L SKU:** VMW-BIANCO-NB-2.5L
- **15L SKU:** VMW-BIANCO-NB-15L

## COVERAGE

- **1L/1 qt.** approximately 100 – 140 sq/ft\*
- **2.5L/.67 gal.** approximately 250 – 350 sq/ft\*
- **15L/4 gal.** approximately 1,500 – 2,100 sq/ft\*

*\*Based on average absorption (actual coverage will vary depending upon application method, surface texture, and absorption)*

## RECOMMENDED DILUTION

2nd coat ONLY	1L/1QT	2.5L/0.67GAL
50%	500ml	1.25L
80%	800ml	2L

## APPLICATION ON INTERIOR DRYWALL

No primer needed. Mix product thoroughly before use.

- 1** Apply 1st coat undiluted (or with 5% water for easier application) using a crosshatch technique with a Romabio Small Spalter Brush. Let the limewash dry to touch, 4-6 hours.
- 2** Apply 2nd coat diluted 50% - 80% using a crosshatch and/or cloth technique depending on the desired effect. Let the limewash dry to touch, 4-6 hours.

Velatura Mineralwash allows time to artistically work the paint into the wall surface but it's ideal to maintain a wet edge. When cutting in, make sure to work the paint progressively to not show lines.

## HELPFUL TIPS

- Work in small sections to keep a wet edge and allow more movement
- Test dilution rates to get the artistic look you want
- Use drop cloths during 2nd coat since the higher dilution splatters more.

### TOOLS



Scan to  
Learn More